

Florida Engineering Solutions - Newsletter

January, 2010



Today's Ideas



Tomorrow's Results

Dear John,

Florida Engineering Solutions is keeping a positive attitude and looking forward into the future. I believe that we can only grow and improve within the coming years.

This Month, we have listed Construction projects that are underway or about to begin. This is great news showing that the construction industry is not dead and will continue to survive. We will continue to bring you news that is helpful to you and your business.

If you have any comments or suggestions, please give us your feedback.

Sincerely,

**John Hoy, President
Florida Engineering Solutions, Inc.**

Featured Article

The logo for the 396 Alhambra project, featuring the number '396' above the word 'ALHAMBRA' in a stylized font.

The new 396 Alhambra Project in Coral Gables is underway..

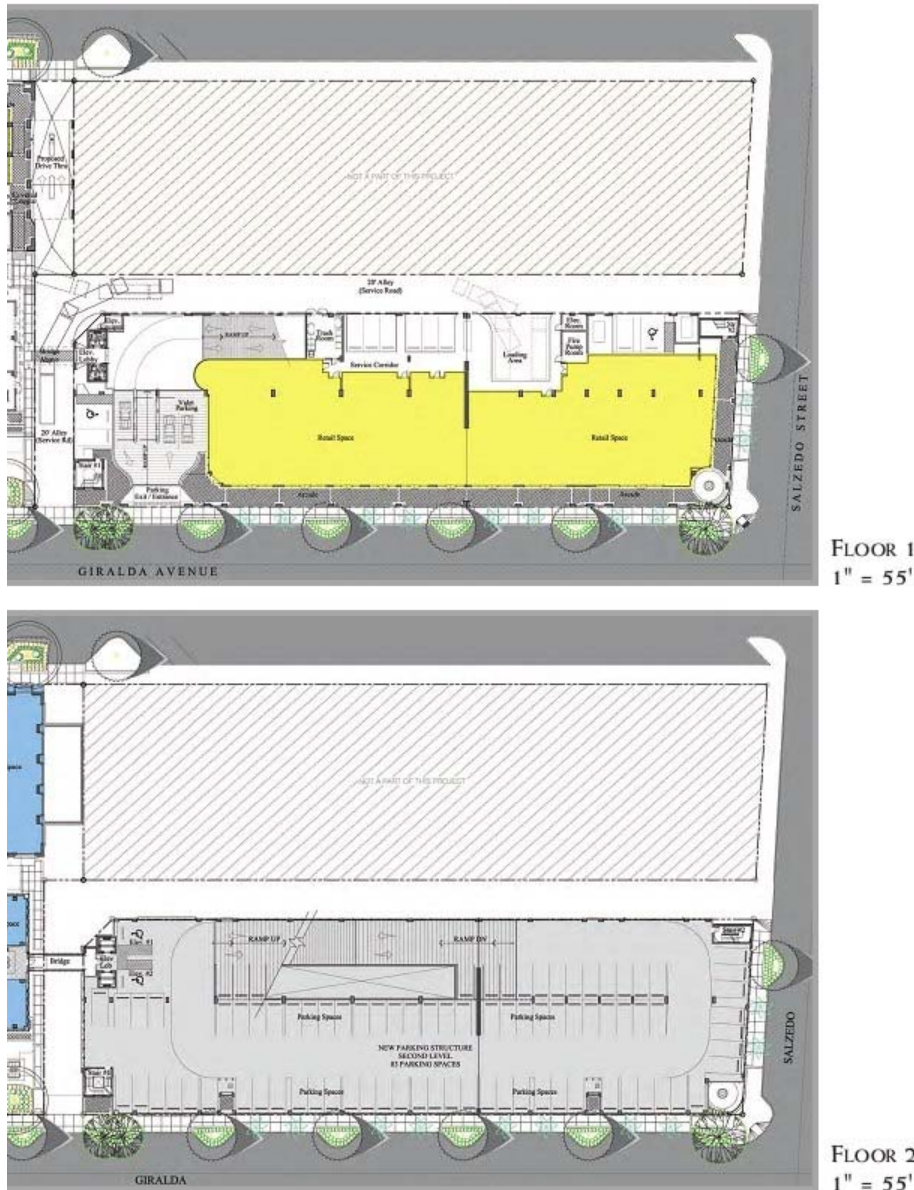
Geek Speak!

Stucco-it's not real exciting, but some stuff you may need to know

What's Going On!

Some Current Projects in

396 Alhambra



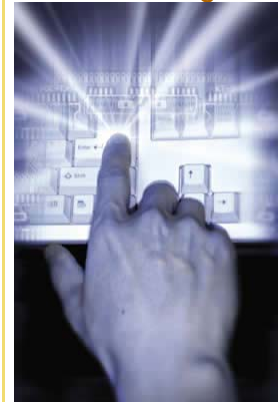
The new 396 Alhambra construction is underway. It's located in Coral Gables and is a 15 story class A office space including 30,000 Sq. Ft. of ground floor retail space. Also included is a 8 story 884 space parking garage. The garage is being constructed by [Baker Concrete Construction](#). The parking structure consists of slightly less than 1,000 precast Joist and soffit beam members.

For more information on the 396 Alhambra - Please see the links below:

WWW.396ALHAMBRA.COM

Florida

[Join Our Mailing List](#)



If you know someone that may benefit from our newsletter, please forward the e-mail to give them a chance to sign-up.

Geek Speak

Stucco in Florida can be a problem when not specified and/or installed properly. The first thing that any designer and installer must realize is that codes and standards are here to help and set a minimum standard for performance, both on the design and installation side. These codes and standards include some of the following:

- ASTM C 926 Standard Specification for Application of Portland Cement-Based Plaster
- ASTM C 1063 Standard Specification for Installation of Lathing and Furring to Receive Interior and Exterior Portland Cement-Based Plaster.
- ASTM C 897 Standard Specification for Aggregate for Job-Mixed Portland Cement-Based Plaster.
- ASTM C 932 Standard Specification for Surface-Applied Bonding Compounds for Exterior Plastering.
- ACI 524 R - Guide to Portland Cement-Based Plaster
- PCA Portland Cement Plaster (Stucco) Manual
- FCPA & NNCMA: Water Penetration Testing of Stucco on Concrete Masonry Construction.
- PCA Repair of Portland Cement Plaster (Stucco).

Knowledge and education of both the designer and installer is crucial to a successful project that will perform as expected without issues in the future.

Some additional information may be found within the following websites:

www.astm.org

www.concrete.org

www.ncma.org

www.cement.org

www.fcpa.org

Florida Engineering Solutions can provide assistance with your stucco project - Give us a call - we would be happy to help. www.florida-engineer.com

What's Going On?

\$224 Million Duval County Courthouse

This 800,000-sf facility will serve as a combined civil and criminal courthouse for Duval County. The seven-story courthouse will include 51 courtrooms, judges chambers and offices, and other space. The courthouse will be a cast-in-place concrete structure with a glass and pre cast exterior in a traditional and classic

design. The City said it should be able to complete the courthouse by 2010.

[Duval Courthouse](#)

8333 Downtown Doral in Miami

A ground breaking has been held for 8333 Downtown Doral, a Class A, six story , 150.000sf office building. The project represents the first for lease office building in the mixed-use community and is nearly 30% pre-leased by the State of Florida Agency for Health Care Administration. Occupancy is schuled for the third quarter of 2012.

[Downtown Doral](#)

J.J.Taylor Warehouse

This beverage transfer facility will be constructed utilizing tilt-wall panels and insulated cooler panels. Incorporated is 4.600sf of office space, 3.000sf of refrigerated cooler and 17.000sf of warehouse. Built on nearly six acres, the anticipated construction schedule is five months.

[Taylor Warehouse](#)

[Florida Engineering Solutions](#)

All of us at Florida Engineering Solutions appreciate you and your business. If we can be of any assistance with your next project, do not hesitate to contact us.

Dustin Hardman
Manager - Florida Sales
Cell: 352-467-1363
E-mail: dustin@florida-engineer.com

Florida Engineering Solutions, Inc.

12620 Curley St. - #105
San Antonio, Florida 33576
Ph: 352-588-5311
Fx: 352-588-5411
Web: www.florida-engineer.com



[Forward email](#)

SafeUnsubscribe®

This email was sent to jhoy@florida-engineer.com by jhoy@florida-engineer.com.
[Update Profile/Email Address](#) | Instant removal with [SafeUnsubscribe™](#) | [Privacy Policy](#).

Email Marketing by



Florida Engineering Solutions, Inc. | 12620 Curley St. - #105 | San Antonio | FL | 33576